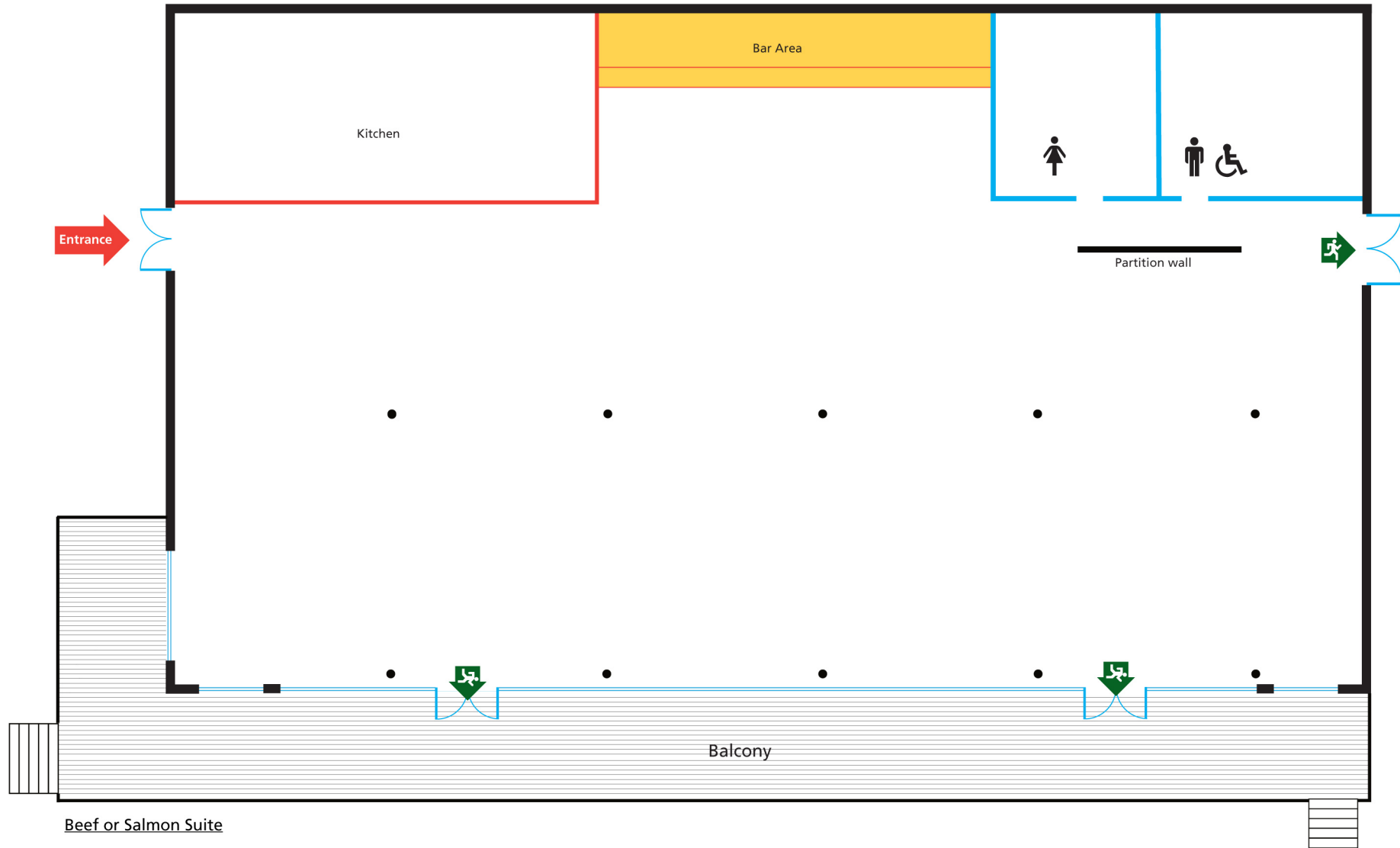




DOWN ROYAL
Racecourse EST'D 1685

Beef or Salmon Suite



Beef or Salmon Suite

41.25mts x 15mts

Beef or Salmon suite has a ceiling height of 3500mm at the lowest point
In the recesses it rises to 3650mm



DOWN ROYAL
Racecourse EST'D 1685

Down Royal Racecourse
Maze, Lisburn
Co Down
BT27 5RW

T: 028 92 621256
F: 028 92 621433
E: info@downroyal.com
W: www.downroyal.com

Beef or Salmon Suite

Situated on the ground floor of the new Pavilion, the Beef or Salmon Suite overlooks the finishing straight at the racecourse and enjoys spectacular views of the surrounding countryside. These views can also be enjoyed from the spacious outdoor balcony. This room is completely self-contained with its own fully equipped kitchen, bar area, cloakroom and toilets and has an integrated PA system.

Room Capacity

	Theatre	Banquet	Cabaret	Reception	Meeting
Beef or Salmon	600	500	350	-	-

Room Capability

	Conference	Seminar	Reception	Exhibition/ trade show	Meeting	Product launch
Beef or Salmon	√	√	-	√	-	√

Contact us

Contact us today to discuss your event requirements and find out more about how Down Royal can make your event unforgettable.

Events Coordinator: Vicki Moody
vicki@downroyal.com
0044 (0) 28 92 621 256